

Test Your Wood with a Moisture Meter



Why should I use a moisture meter?

It takes the guesswork out of knowing if wood is dry, seasoned, and ready to burn (below 20% moisture content).

i You can buy a basic wood moisture meter online or at a hardware store for \$15 - \$40.



What are the benefits of burning dry, seasoned wood?

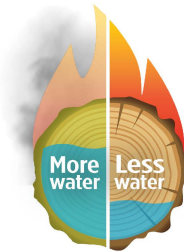
- Makes it easier to start, build, and burn hot fires
- Uses less wood to get the same amount of heat, meaning less wood to split and stack
- Reduces creosote build-up, and decreases chimney fires



What if I burn wood that has a high moisture content?

Wet wood produces less heat and more smoke and creosote. Wood smoke can harm your health and creosote is a chimney hazard.

i To dry and season your wood, split, stack, cover and store it for at least 6-12 months. Split wood dries much faster than whole logs, and smaller pieces burn cleaner.



**Burn drier.
Burn better.**

Use dry wood for a cleaner fire with more heat and less smoke



How do I test my firewood?

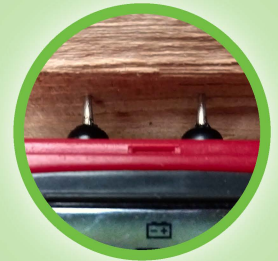
Test the newly split side of the log



Split the wood



Test the **newly** split side



Insert probes into the wood grain

Wood burns most efficiently when the moisture content is between 15-20%



See your meter's instructions for more specifics

Learn more at www.epa.gov/burnwise/videos